

THIS DRAWING IS UNPUBLISHED. RELEASED FOR PUBLICATION 20
 © COPYRIGHT 20 BY - ALL RIGHTS RESERVED.

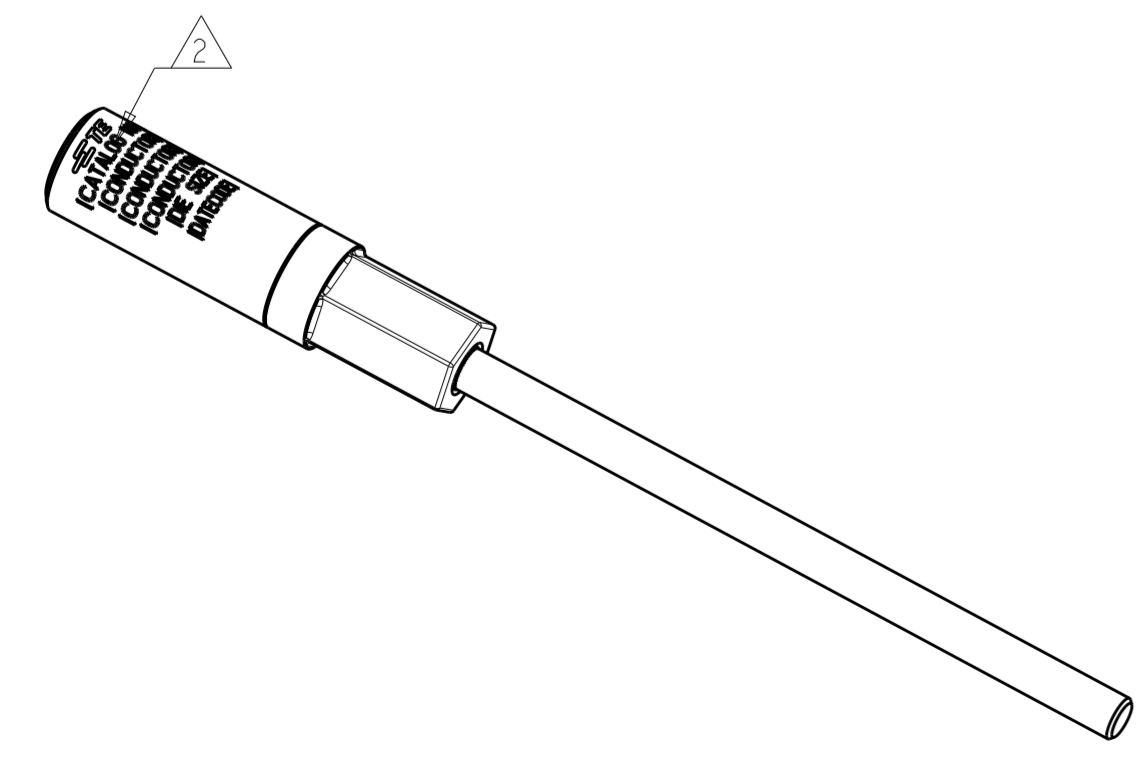
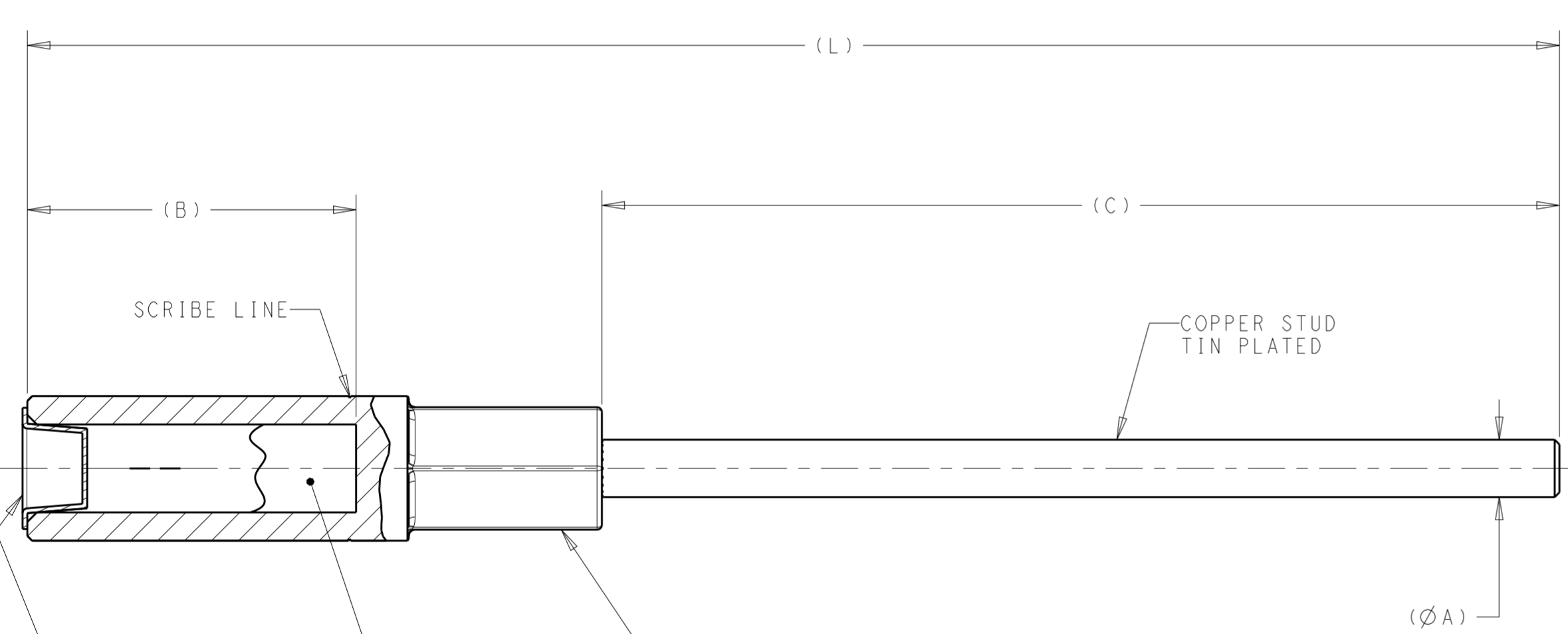
REVISIONS				
P	LTR	DESCRIPTION	DATE	APVD
B1		LC20-0008-16 / ECO-16-000900	22JAN2016	JG BJ
C		LC20-0052-16 / ECO-16-011476	28JUN2016	JG BJ
C1		LC20-0108-16 / ECO-16-015182	19OCT2016	JG BJ
D		LC20-0002-17 / ECR-17-001775	07FEB2017	JG BJ

- 1. ACCOMMODATES: SEE TABLE
- 2. MARKING:



[CATALOG NO]
 [CONDUCTOR]
 [CONDUCTOR]
 [CONDUCTOR]
 [DIE SIZE]
 [DATE CODE]

- 3. ALL DIMENSIONS ARE FOR REFERENCE ONLY.
- 4. CONNECTOR BARREL CONTAINS FACTORY APPLIED INHIBITOR AND IS CAPPED.
- 5. CONNECTOR PACKAGED WITH ABRASIVE TAPE AND INSTALLATION INSTRUCTION SHEET 408-32202.



DIE SIZE	L	C	B	ØA	AAC	ACSR	CATALOG NO.	PART NO.
249,840	7.6	4.0	2.06	.360	4/0 STR - CMPR	3/0 (6/1)	SCP-40-4	2-2182448-7
					3/0 STR - CMPR, 4/0 CPT - SOL	2/0 (6/1)	SCP-30-4	2-2182448-6
					2/0 STR - CMPR, 3/0 CPT - SOL	1/0 (6/1)	SCP-20-4	2-2182448-5
BG,243,5/8	6.7	4.0	1.12	.258	1/0 STR - CMPR, 2/0 CPT - SOL	#1 (6/1)	SCP-10-4	2-2182448-4
					#1 STR - CPT 1/0 CPT - SOL	#2 (6/1) #2 (7/1)	SCP-1-4	2-2182448-3
					#2 STR- SOL #1 SOL	-	SCP-2-4	2-2182448-2
BG,243,5/8	5.2	2.5	1.12	.258	1/0 STR - CMPR, 2/0 CPT - SOL	#1 (6/1)	SCP-10-2.5	2-2182448-1
					#1 STR - CPT 1/0 CPT - SOL	#2 (6/1) #2 (7/1)	SCP-1-2.5	2-2182448-0
					#2 STR- SOL #1 SOL	-	SCP-2-2.5	1-2182448-9
249,840	9.6	6	2.06	.360	4/0 STR - CMPR	3/0 (6/1)	SCP-40-6	1-2182448-8
					3/0 STR - CMPR, 4/0 CPT - SOL	2/0 (6/1)	SCP-30-6	1-2182448-7
					2/0 STR - CMPR, 3/0 CPT - SOL	1/0 (6/1)	SCP-20-6	1-2182448-6
BG,243,5/8	8.7	6	1.12	.258	1/0 STR - CMPR, 2/0 CPT - SOL	#1 (6/1)	SCP-10-6	1-2182448-5
					#1 STR - CPT 1/0 CPT - SOL	#2 (6/1) #2 (7/1)	SCP-1-6	1-2182448-4
					#2 STR- SOL #1 SOL	-	SCP-2-6	1-2182448-3
249,840	12.6	9	2.06	.360	4/0 STR - CMPR	3/0 (6/1)	SCP-40-9	1-2182448-2
					3/0 STR - CMPR, 4/0 CPT - SOL	2/0 (6/1)	SCP-30-9	1-2182448-1
					2/0 STR - CMPR, 3/0 CPT - SOL	1/0 (6/1)	SCP-20-9	1-2182448-0
BG,243,5/8	11.7	9	1.12	.258	1/0 STR - CMPR, 2/0 CPT - SOL	#1 (6/1)	SCP-10-9	2182448-9
					#1 STR - CPT 1/0 CPT - SOL	#2 (6/1) #2 (7/1)	SCP-1-9	2182448-8
					#2 STR- SOL #1 SOL	-	SCP-2-9	2182448-7
249,840	15.6	12	2.06	.360	4/0 STR - CMPR	3/0 (6/1)	SCP-40-12	2182448-6
					3/0 STR - CMPR, 4/0 CPT - SOL	2/0 (6/1)	SCP-30-12	2182448-5
					2/0 STR - CMPR, 3/0 CPT - SOL	1/0 (6/1)	SCP-20-12	2182448-4
BG,243,5/8	14.7	12	1.12	.258	1/0 STR - CMPR, 2/0 CPT - SOL	#1 (6/1)	SCP-10-12	2182448-3
					#1 STR - CPT 1/0 CPT - SOL	#2 (6/1) #2 (7/1)	SCP-1-12	2182448-2
					#2 STR- SOL #1 SOL	-	SCP-2-12	2182448-1

THIS DRAWING IS A CONTROLLED DOCUMENT.

DWN	J. GUPPY	05JAN2015
CHK	A. BULZA	25NOV2015
APVD	B. JOHNSON	27NOV2015

STE TE Connectivity

NAME: COMPRESSION PIN CONNECTOR, #2 AWG TO 4/0 AWG

SIZE: A2 CAGE CODE: 00779 DRAWING NO: C-2182448

SCALE: NTS SHEET 1 OF 1 REV D